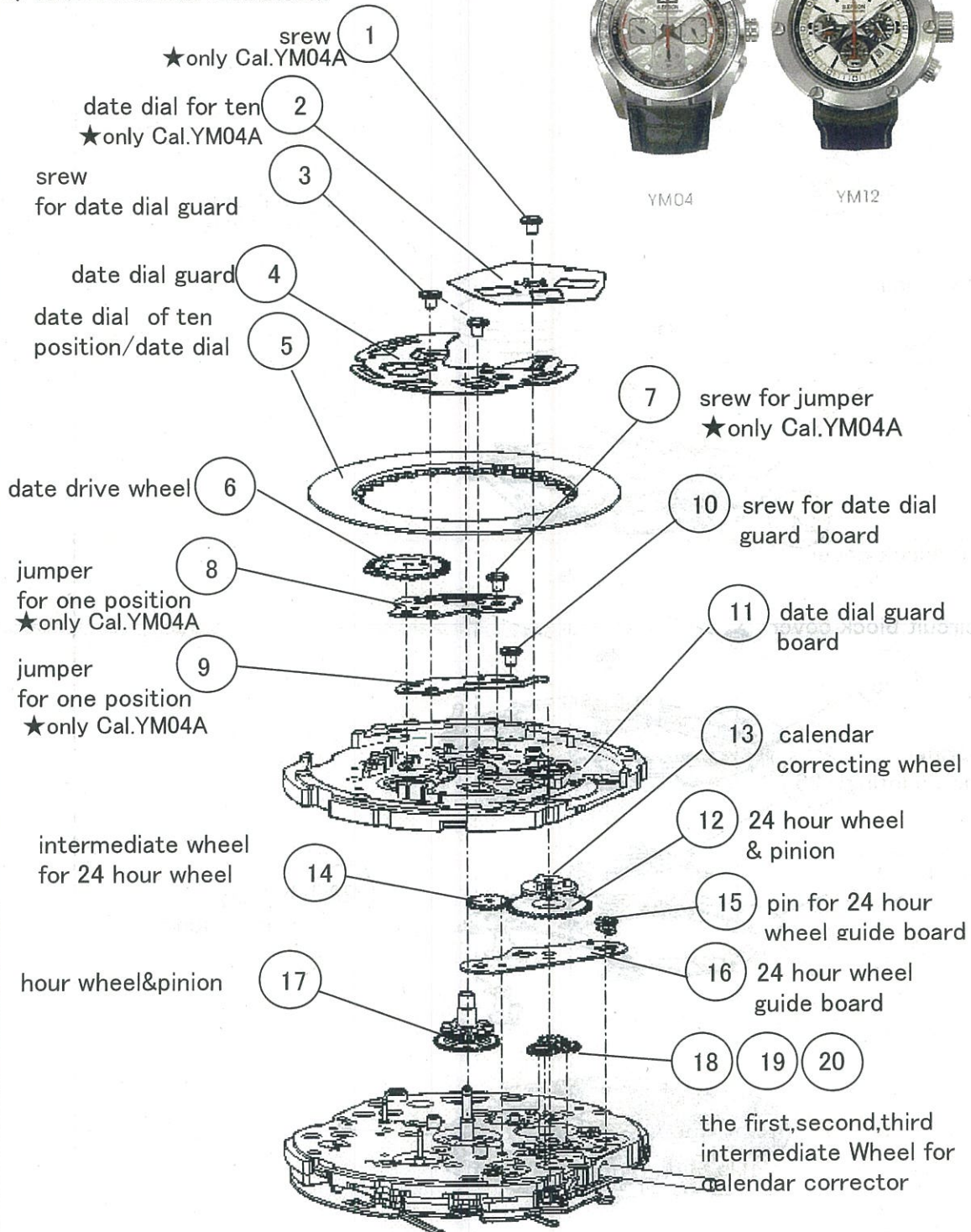


**YM04, YM12 DISASSEMBLE CHART**

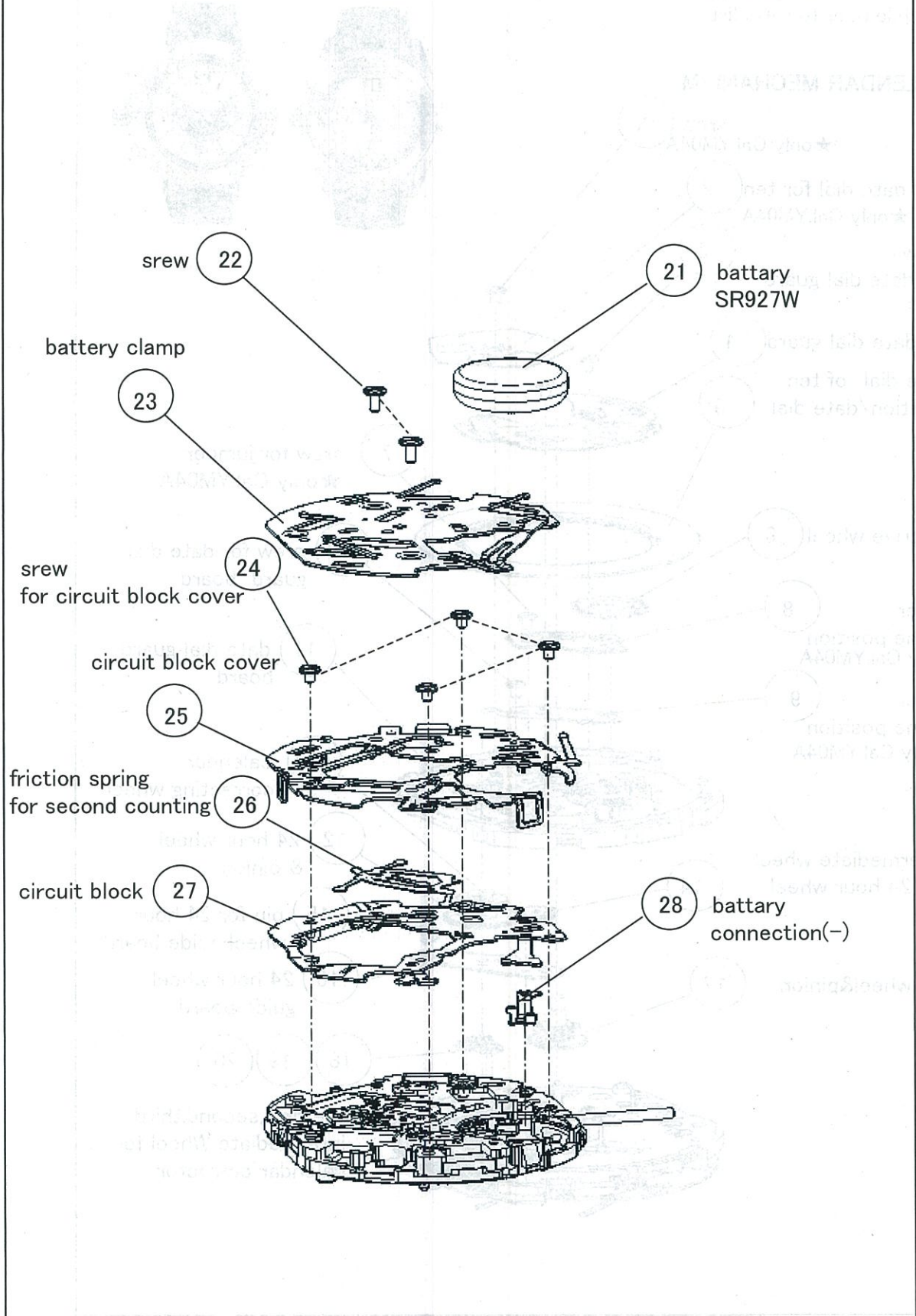
- Disassembling Procedures Fig. ① → ⑤⑧
- Assembling Procedures Fig. ⑤⑧ → ①
- Parts code refer to parts list



**1) CALENDAR MECHANISM**



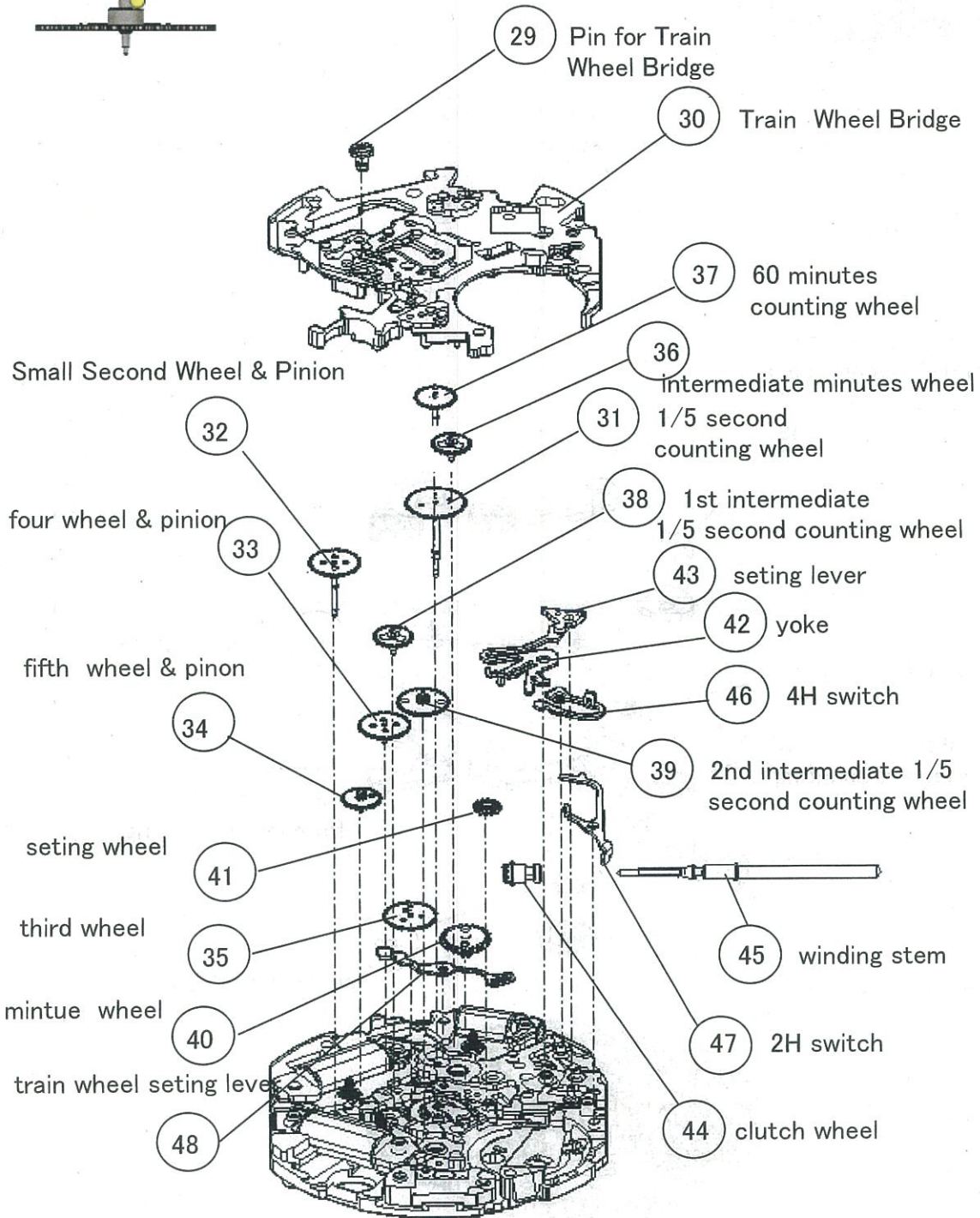
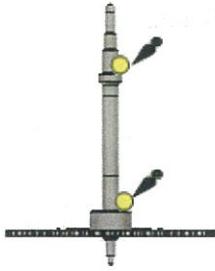
2) CIRCUIT BLOCK AND BATTERY



3) TRAIN WHEEL MECHANISM AND SETTING MECHANISM

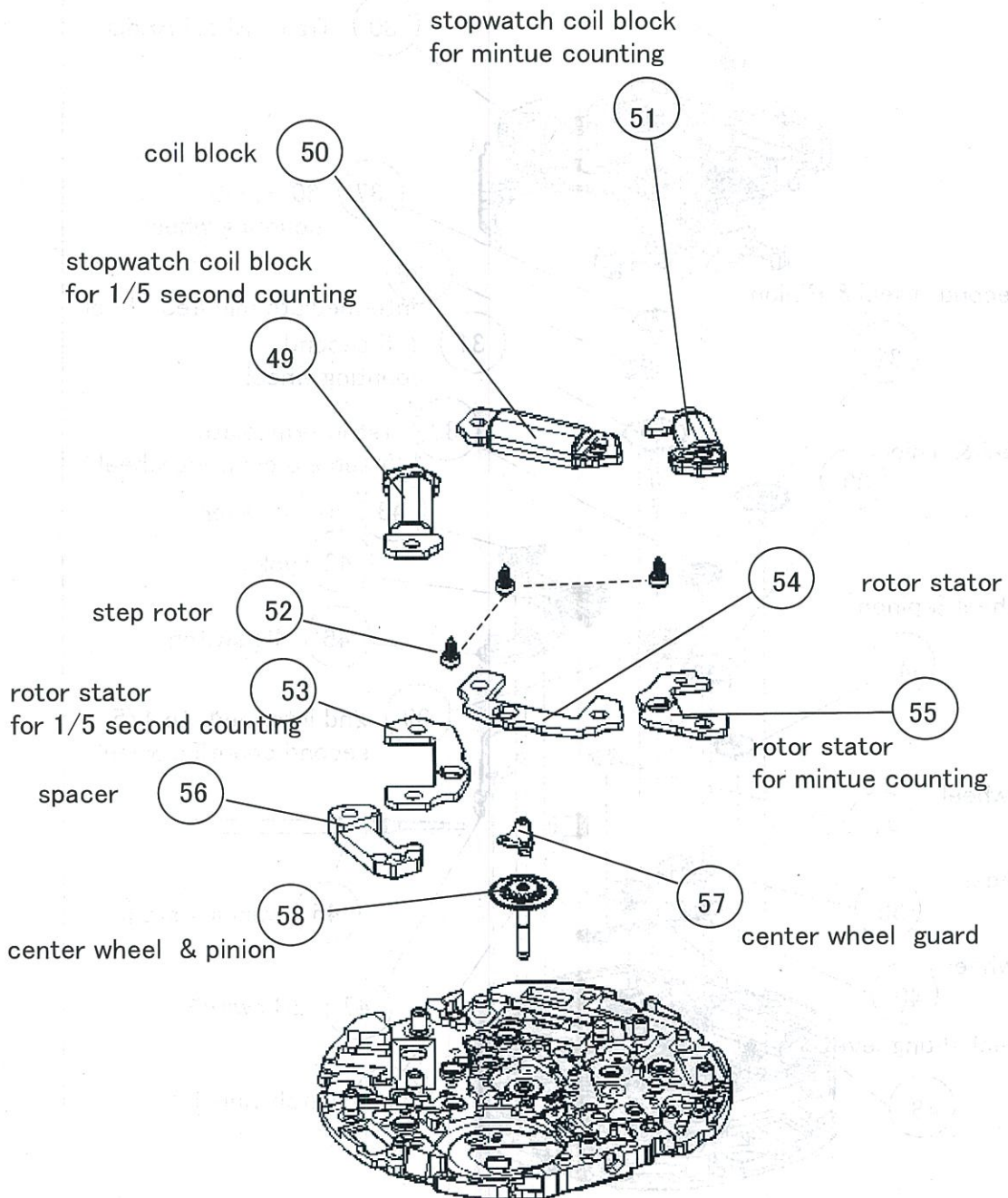
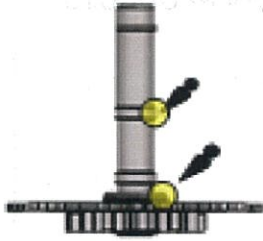


Lubrication of second counting wheel (31)



#### 4) STEP ROTOR (COIL BLOCK, ROTOR & STATOR)

Lubrication of center wheel & pinion (58)

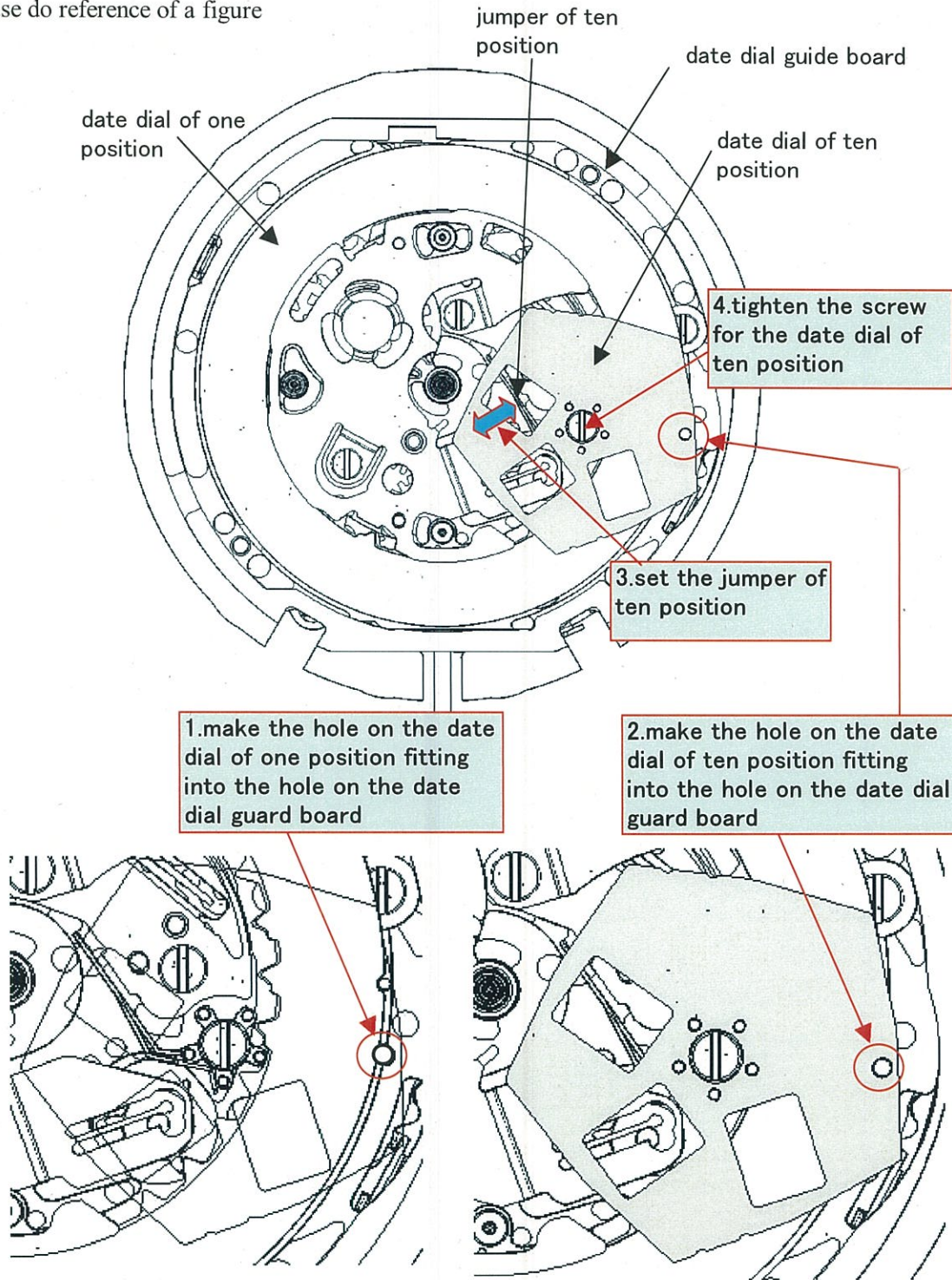


### 2.YM04 Attention To Assemble

Assembling position of date dial

There is a hole each other on the date dial of ten position, the date dial of one position and the date dial guide board. The calendar mechanism is able to work correctly Only the date dial of ten position and the date dial of one position are set on the correct position.

Please do reference of a figure



**Parts List - Chronograph series 秒表系列**



No.	PARTS NAME	CHINESE	Qty	YM04A	YM12A
1	Screw For Date Dial of Ten Position	十位日曆盤螺絲	1	0012 354	-
2	Date Dial of Ten Position(white)	十位日曆盤(白)	1	0878 B95	-
2	Date Dial of Ten Position(black)	十位日曆盤(黑)	1	0878 B96	-
3	Screw For Date Dial Guard	日曆盤固定片螺絲	2	0012 354	←
4	Date Dial Guard	日曆盤固定片	2	0808 522	0808 523
5	Date Dial(white)	日曆盤	1	-	0878 B99
5	Date Dial(Black)	日曆盤	1	-	878 C01
5	Date Dial of One Position(white)	一位日曆盤(白)	1	0878 B93	-
5	Date Dial of One Position(black)	一位日曆盤(黑)	1	0878 B94	-
6	Date Driving Wheel	日曆推動輪	1	0802 515	0802 580
7	Screw For Jumper	日曆簧螺絲	1	0012 354	-
8	Jumper for one position dial	個位日曆簧	1	0810 504	-
9	Jumper for Ten position dial	十位日曆簧	1	0810 505	-
10	Screw For Date Dial Guide Board	日曆盤導向板螺絲	1	0012 354	←
11	Date Dial Guide Board	日曆盤導向板	1	0712 505	0712 506
12	24 Hour wheel	24時輪	1	1002 534	1002 535
13	Date Corrector Setting Wheel	日期修正輪	1	0737 505	←
14	24 Hour Intermediate wheel	24時過輪	1	0817 536	←
15	Pin for 24 Hour Wheel Guide Board	24時輪板固定片銷	1	0027 973	←
16	24 Hour Wheel Guide Board	24輪固定片	1	4288 500	←
17	Hour Wheel&pinion	時輪	1	0271 636	0271 637
18	First Intermediate Wheel for Calendar Corrector	第一日曆過輪	1	0962 505	0962 580
19	Second Intermediate Wheel for Calendar Corrector	第二日曆過輪	1	0962 504	←
20	Third Intermediate Wheel for Calendar Corrector	第三日曆過輪	1	0962 504	←
21	Battery	電池	1	SR927SW	←
22	Screw For Battery Clamp	電池夾螺絲	2	0022 230	←
23	Battery Clamp	電池夾板	1	4225 576	4225 578
24	Screw For Circuit Block Cover	電路板蓋螺絲	4	0022 459	←
25	Circuit Block Cover	電路板蓋	1	4457 814	←
26	Friction Spring for Second Counting	計秒阻力簧	1	0396 580	←
27	Circuit Block	電路板	1	4000 727	←
28	Battery Connection (-)	負極片	1	4270 710	←
29	Pin for Train Wheel Bridge	伝動輪夾板固定銷	1	0027 974	←
30	Train Wheel Bridge	伝動輪夾板	1	0125 577	←
31	1/5 Second Counting wheel	1/5秒計時輪	1	0888 501	0888 502
32	Small Second Wheel & Pinion	細秒針輪	1	0240 511	0240 512
33	Fourth Wheel & Pinion	4號輪	1	0241 583	←
34	Fifth Wheel & Pinion	5號輪	1	0701 581	←
35	Third Wheel & Pinion	3號輪	1	0231 580	←
36	Intermediate Minutes counting wheel	分計中間車	1	0950 590	←
37	Minutes Counting Wheel	分計時輪	1	0902 500	0902 501
38	1st Intermediate Wheel for 1/5 Second Counting	1/5秒計一號過輪	1	0885 590	←
39	2nd Intermediate Wheel for Second Counting	1/5秒計二號過輪	1	0885 591	←
40	Minute Wheel & Pinion	度數輪/分輪	1	0261 580	←
41	Setting Wheel	小鐵車/撥針輪	1	0281 580	←
42	Yoke	換日竿/橫擔	1	0384 582	←
43	Setting Lever	押掣竿	1	0383 592	←
44	Clutch Wheel	豬籠輪/離合輪	1	0282 585	←
45	Winding Stem	柄軸/巴心	1	0351 583	←
46	Switch lever (B)	4H按掣竿(B)	1	4450 701	←
47	Switch lever (A)	2H按掣竿(A)	1	4450 703	←
48	Train Wheel Setting Lever	輪組止動竿	1	0391 591	←
49	Coil Block For 1/5 Second Counting	1/5秒 計秒線圈	1	4002 700	←
50	Coil Block	線圈	1	4002 700	←
51	Coil Block For Minute Counting	60分 計分線圈	1	4002 711	←
52	Step Rotor	轉子	3	4146 710	←
53	Rotor Stator For 1/5 Second Counting	1/5秒計定子	1	4239 717	←
54	Rotor Stator	轉子甲板/定子	1	4239 710	←
55	Rotor Stator For Minute Counting	分計定子	1	4239 712	←
56	Spacer	間隔片	1	0439 594	←
57	Central Wheel Guard	中心輪固定片	1	4283 581	←
58	Central Wheel & Pinion	中心輪	1	0221 604	0221 605